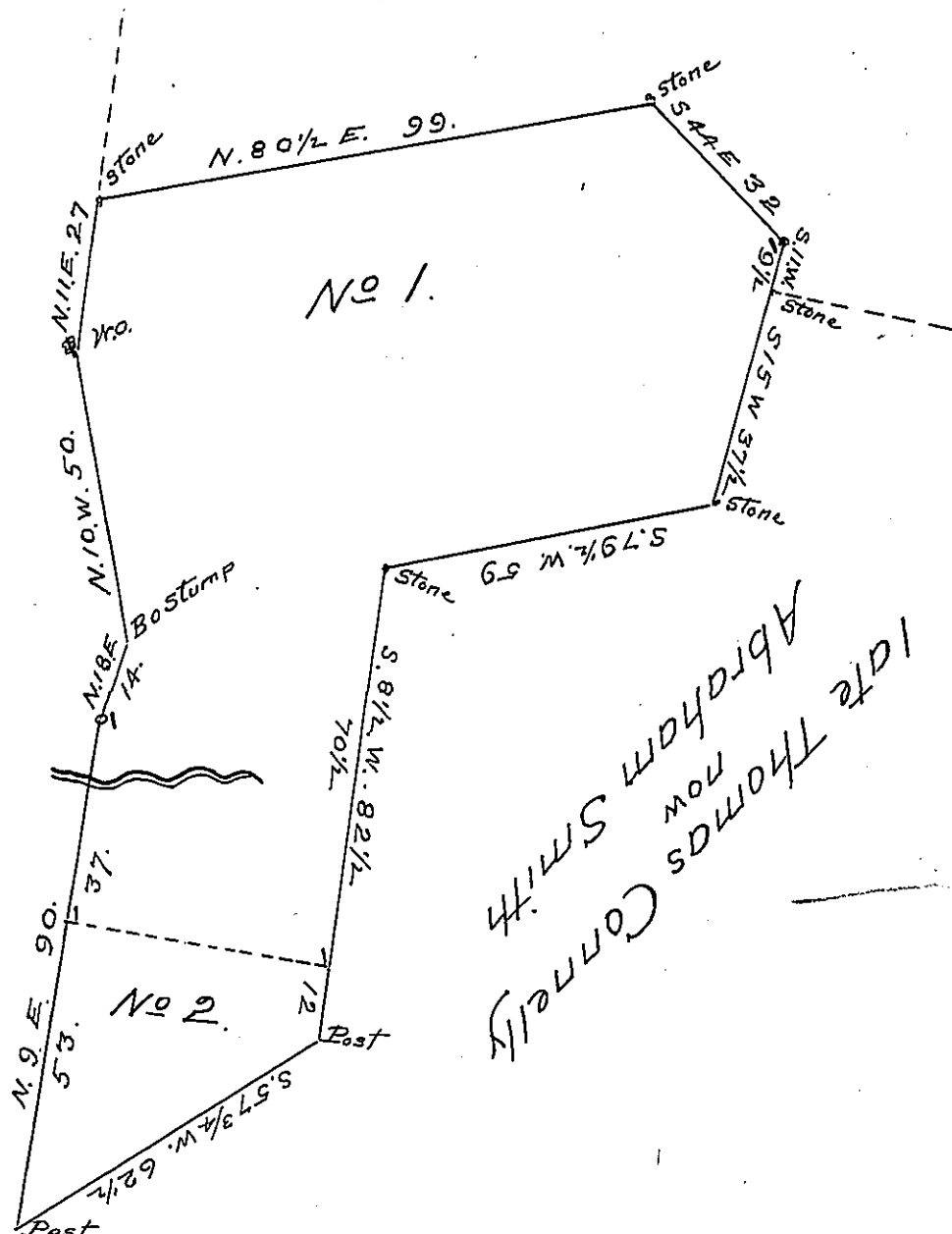


Nathaniel Brittain

late Joseph Martin (in trust for the use
 of James Moore's Heirs)
 now John Rosebury



A Draught of two adjoining Tracts of Land situate in Lower Mount Bethel, Northampton County, Surveyed unto John Deatz by virtue of two several Warrants - viz No 1 Surveyed the 18th October 1814 by Warrant dated the 10th December 1813 - No 2 surveyed the 20th May 1815 by Warrant dated the 19th December 1814 - containing together Seventy three Acres, One Hundred and forty Perches and the allowance of six per Cent *qca.*

Geo Palmer D.S.

To Rich^d T. Leech Esq. S.G.

IN TESTIMONY that the above is a copy of the original remaining on file in the Department of Internal Affairs of Pennsylvania, made conformably to an Act of Assembly approved the 16th day of February, 1833, I have hereunto set my Hand and caused the Seal of said Department to be affixed at Harrisburg, this second day of August 1904.

George B. Palmer
 Secretary of Internal Affairs.